



TIMBERLOOK
FLUSH SASH
— HERITAGE WINDOWS —

Pictured: Flush Casements in Painswick (RAL 7038)

www.timberlook.com



The Timberlook Heritage Flush Sash successfully replicates heritage designs in modern uPVC. With period proportions and thoughtful design details, Timberlook is made for renovation projects and the conservation of historic buildings.

Designed for modern living, Timberlook Heritage windows and doors are energy-efficient and virtually maintenance free. The sleek and minimal aesthetic is also suited to new-build and contemporary homes.





Contents

02	Welcome
04	Tradition and Heritage
06	Before & After
08	Timberlook Technology
10	The Best of Both Worlds
12	A Remarkable Renovation
14	The Radlington Cill
16	Flush Sash Doors
18	Conservation and Planning
22	New Build Projects
24	Colours <i>the Timberook Collection</i>
26	Finishing Touches
28	Completing the Look

TRADITION

Balancing authentic heritage design with modern materials and technologies.



The development of new technologies and materials has been moving at a fast pace, creating more energy-efficient windows with greater longevity, higher security, and better recyclability. We feel an occasional look back at our past can also have its merits too. It enables us to preserve the look and feel of our architectural heritage, and to make the most of those designs and aesthetics that were perfected long ago.

Timberlook PVCu flush casement windows are virtually indistinguishable from their timber counterparts, yet have a number of significant advantages. Our modern, wood-effect PVCu windows are undoubtedly more affordable than real wooden frames, and they can have a significant impact on the the comfort and appearance of any property. Relatively recent advances in materials and manufacturing processes also mean that our windows and doors have better insulative performance while also being easier to maintain.



Pictured: Timberlook Flush Sash in Cream Foil



As beautiful as real timber is, it can swell and shrink, or can warp and twist, depending on the weather. Wooden window frames are expensive to buy and require ongoing care and attention. The cost and time taken to preserve their original appearance soon adds up. Timberlook Heritage windows simply don't require that maintenance.

The flush exterior finish, with square mortise & tenon looks, mimics heritage casement designs, and Timberlook boasts a refined internal decoration that perfectly marries a traditional look with more modern technology and materials.

With a wide selection of period colours and textured wood-effect finishes, Timberlook is an ideal choice for all styles of property. From the natural tones of Cotswold Cream or Painswick, often selected for stone or brick, to contemporary Smooth Anthracite Grey (7016) that matches the most popular aluminium bi-fold door colour.





MOCK TUDOR to MODERN CLASSIC

The *Timberlook Heritage Flush Sash* played a key role in the renovation of this deceptively modern, thatched home on the Fylde Coast.



After

Originally built in 1995, maintenance of the dark beams and wooden windows was overdue when the current owner purchased the property in 2019. During the course of their year-long restoration project, improvements were made to both the look and the feel of the house, including the installation of a suite of **Timberlook** Painswick woodgrain textured windows and a matching Solidor composite front door.

With new windows and glazed units, the thermal efficiency of the building was significantly improved, and the modern uPVC profiles reduced overall maintenance. Opting for the addition of a stylish, single astragal bar design in place of the busy leaded glass also increased the amount of natural light in every room. The old black and wany-edged mock beams gave way to new timbers with smooth, clean lines and finished in a color-matched Painswick green.



It's a successful demonstration of how mock tudor style homes can be modernised in a way that is sympathetic with their often quaint and leafy surroundings.

TECHNOLOGY

The secure and energy-efficient alternative to timber.

With features such as an *optional deep bottom rail* and *concealed external trickle ventilation*, the external appearance of the **Timberlook Flush Sash** is virtually identical to that of an expensive flush timber window.

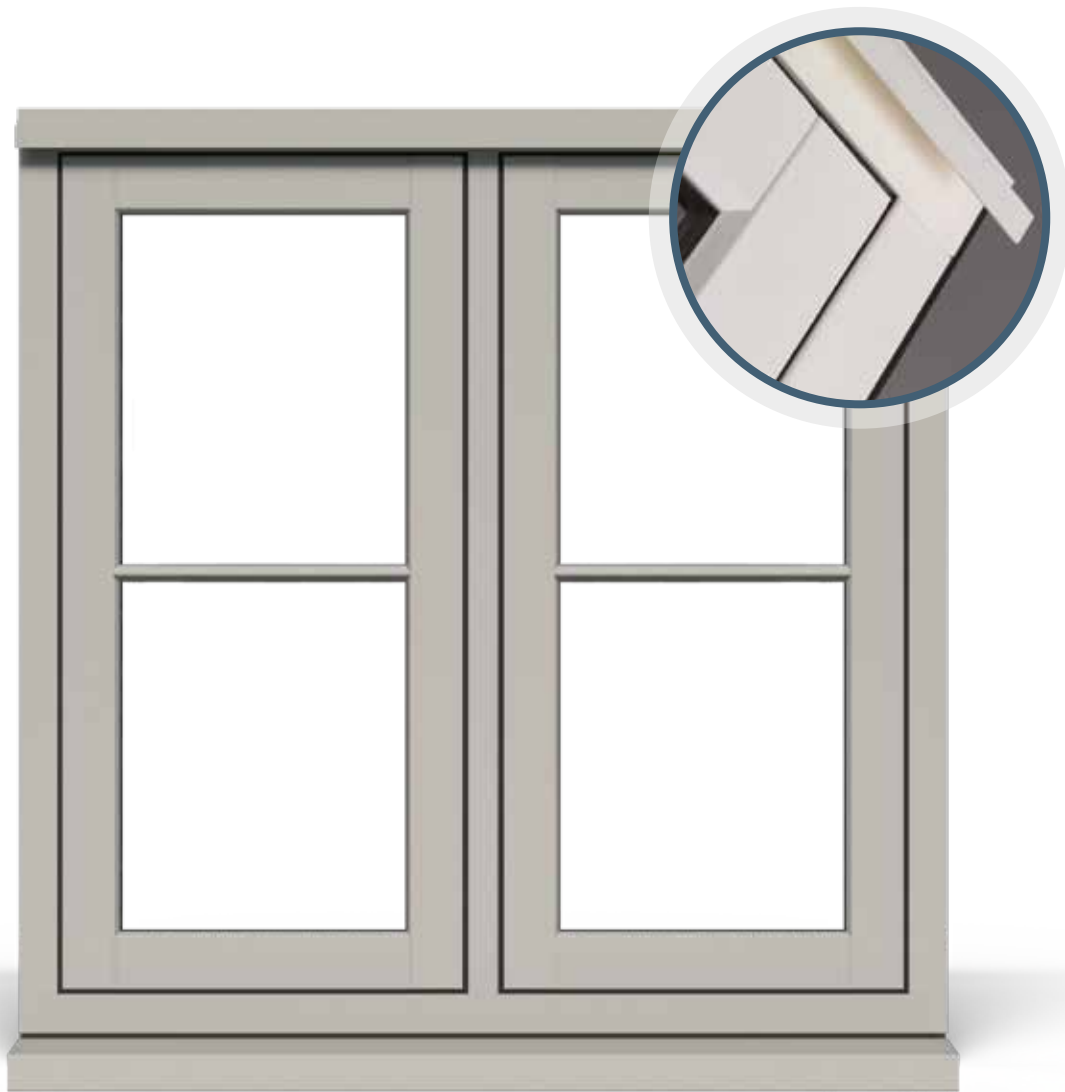
Timberlook is a the new PVCu Flush Sash Window System that boasts a square mortise & tenon looking fabrication for both the sash and the outerframe. This replaces the tell-tale mitred joints that would normally identify a window as being fabricated from PVCu.

Additionally, Timberlook Flush Sash windows have 70mm depth, making installation faster, a slim 60mm sash that replicates traditional wooden frames, and they come fitted with night latches as standard.



Your new windows need to look beautiful on the inside too, so the Timberlook system has a fully sculptured ovolo profile, internally. Curved details provide a much softer, ornate finish to the inside appearance.

The inside can also be finished in one of our beautiful textured woodgrain foils, and it doesn't have to be the same colour as your choice for the outside.



Timberlook Concealed Ventilation

We don't believe you should have to spoil the appearance of your new windows or property when trickle vents are required - they usually make unsightly additions to the external face of a window frame. That's why we developed a head drip that can be attached to the Timberlook outerframe and conceal any external vent canopy.

Are Trickle Vents necessary?

The updates to Building Regulations in June 2022 now stipulate that most newly-installed windows must have trickle ventilation. Generally speaking, the latest regulations require that ventilation provision is not worse than it was before work is carried out:

If you replace a window that already has background ventilation, the new window will require vents that are no smaller than those on the original. The vents must also be controllable (*either by the occupant or automatically*).

When replacing windows that do not already have background ventilation: it is assumed that newer windows are likely to increase the overall airtightness of the home and therefore, to ensure that ventilation provision is not worse than before you carry out the work, vents will need to be fitted to the new windows - to either restore or improve the overall level of ventilation.

Dual-Setting Night Vent

Your Timberlook windows are supplied with highperformance security systems as standard and, unique to the Timberlook Flush Sash Window, a dual setting for night ventilation.

The espaganolette and striker provide an effective, secure locking system with a smooth closing action. Featuring enhanced security that meets PAS24:2016 with ease, it is the perfect for flush fitting windows.





THE BEST OF BOTH WORLDS

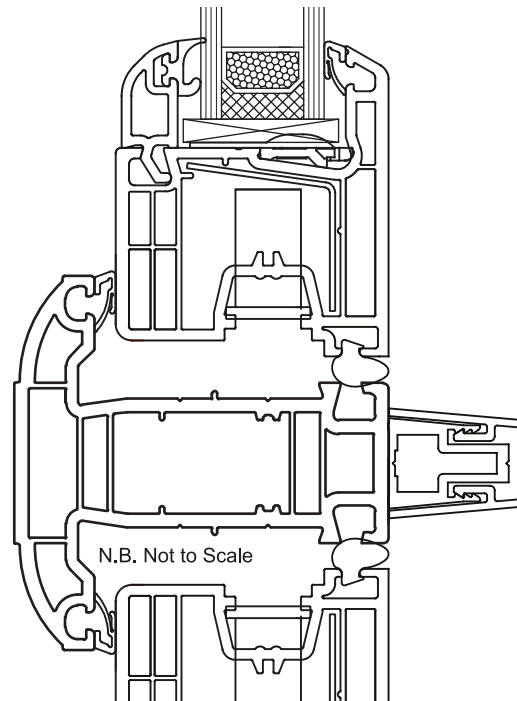
Timberlook Heritage Windows offer you the best of both worlds - a perfect combination of traditional appearances with modern comfort and performance. Beautiful, accurately recreated, timber effect windows and doors with all the benefits of the most up-to date uPVC glazing systems.

Put simply, we have re-designed wooden windows for 21st century living.

It is possible to further recreate original and heritage styles with our '*Cottage Bar*' or *astragal bar*. The glazing bars, which measure 22mm, are mounted onto the surface of the glass to maintain the thermal efficiency of the glazing unit - while also preserving the traditional look of the window.

Timberlook Flush Sash Windows are made in Great Britain by one of the largest fabricators of PVCu & Aluminium window and door systems. Our designers and manufacturing experts draw on many years of combined knowledge and experience to develop innovative solutions like the Timberlook system - maintaining respect for the architecture of the past while preparing buildings to last well into the future.

Flush casements can be found in buildings from all periods, owing to their refined simplicity. The understated and minimal appearance fits perfectly in contemporary properties too. It is now possible to get the character look you want from a thermally efficient and secure window - *tradition working with technology.*



Transom Weather Bar

An optional decorative **transom weather bar** can be fitted externally to our flush casement windows, replicating a particular type of traditional wooden window that can be found with this feature.





GEORGE CLARKE'S REMARKABLE RENOVATIONS



Timberlook Flush Sash Windows and Doors recently featured in an episode of *George Clarke's Remarkable Renovations* on Channel 4.

This 120-year-old cattle shed and milking parlour was originally built at the end of the 1900s, during the Agricultural Revolution. Extended and renovated using the Timberlook Heritage Flush Sash system, it is now a comfortable, contemporary home with a traditional look and feel.



Before



After





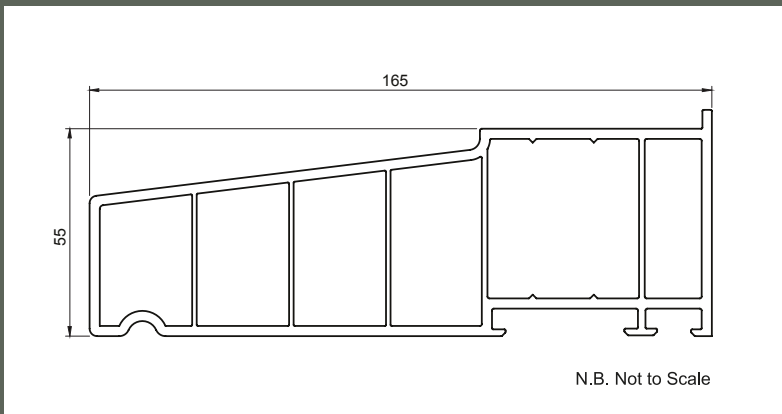
Timberlook Flush Sash windows look beautiful with the contemporary shallow cill that comes as standard, but we feel, however, that The Radlington Cill is one accessory that you simply must consider adding.

The Radlington Cill is a deeper nosed cill at a height of 55mm - it is a modern interpretation of the sort of timber cill found on older traditional timber windows and is a superior upgrade to the standard cill available. Choosing to add the Radlington Cill will make your windows really stand out.

Old imperial bricks varied in height, while modern metric bricks measure 65mm, and old timber cills were deep and often aligned with a course of bricks. The Radlington Cill, at 55mm, is a modern interpretation that allows for packing expansion, bay pole jacks, and irregular mortar.

When replacing traditional timber windows, installation becomes easier and the result more authentic in appearance. The Radlington Cill helps to further recreate that traditional and character look in contemporary and new build properties.

The Radlington Cill (optional addition)



TIMBERLOOK FLUSH DOORS

The only door system to perfectly complement the
Timberlook Heritage Flush Sash Window.

Timberlook flush sash doors are another way to help you sympathetically renovate and restore buildings with charm and character. They are also an excellent way to add traditional style to contemporary and new build homes.

The manufacture of the Flush Door differs slightly from that of the window, as we have to use a discreet diagonal weld to provide the extra strength required by larger glass units. Every effort has been made to ensure that this does not detract from the overall style, making Timberlook the ideal solution for your whole project.

Dummy sashes have been designed to match the sightlines of the French Door set, offering a much more traditional option for wide apertures than a bi-folding door. All doors must open out, but can be fitted with astragal bars. Taller apertures can feature a fanlight in their design.





To achieve the most authentic finish for French doors that feature side panels, we intentionally use a deeper section to both the head and the cill. The resulting effect is that glass heights are all equal, providing a much more consistent sightline. Overall, they have the same appearance as traditional timber doors.

Flush Sash French Doors are available in the same range of colours as our windows, with furniture matching furniture and hardware in both Standard *and* Premium Regency collections. These flush, open-out Timberlook doors are fitted with discreet hinges, maintaining the heritage aesthetic.



CONSERVATION & PLANNING

When designing the Timberlook glazing system, we were careful to consider all aspects of *Article 4 Conservation Area Guidelines for Windows*. We have combined those design principles with the latest technology and the most convenient and cost-effective materials to create modern, secure, and thermally efficient products that - most importantly - preserve the traditional look of your property and home.

Timberlook Flush Sash Windows can meet local authority conditions for use in conservation areas and listed buildings.

They were recently accepted for use for a substantial home-building project in the heart of The Cotswolds. The local planning authority were satisfied that the appearance was authentic enough for use and commented:

“...accepted as a variation on Condition 11, they are considered to successfully mimic traditional flush casements, and care has been taken over details such as the cill and trickle ventilation...”

Heritage Officer, Cotswold Council





What is Article 4?

Article 4 directions are made by a local planning authority. They restrict normal permitted development rights and mean that a planning application would be needed for any development work. The use of modern materials could sometimes be restricted, including window systems, if they are not appropriate. The local authority will consider their shape, size, and overall aesthetic.

Timberlook has been specifically designed to mimic traditional and historic window designs while using a modern materials and modern materials should be accepted, provided that the window is designed with dimensions, detailing and opening mechanisms that are similar to the original windows - this is the essence of Timberlook.

Planning Permission should always be obtained from the Local Planning Authority before commencing any works.



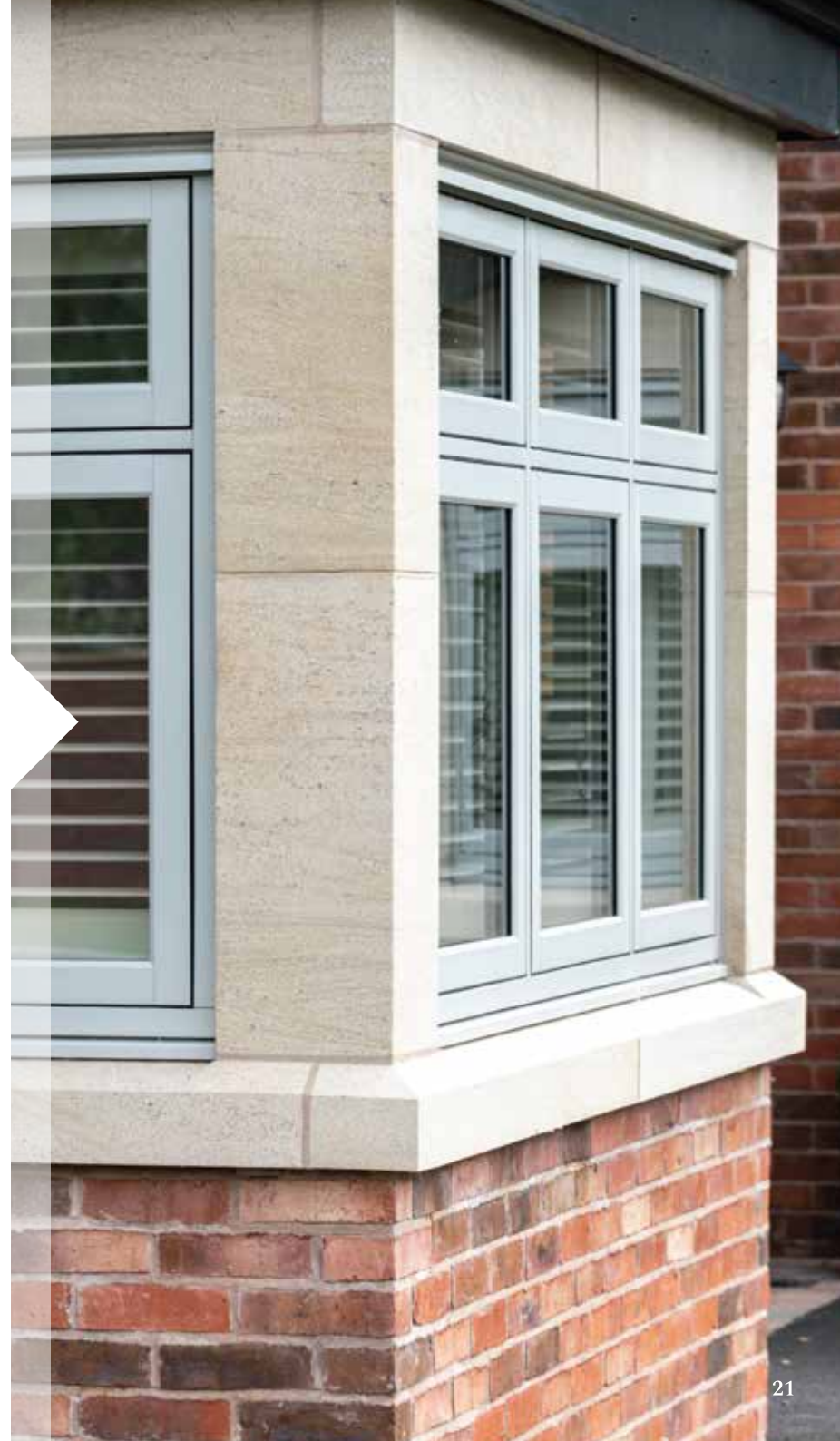
What are Listed Buildings?

A listed building has been simply determined to have architectural or historic interest, and that status brings it under the consideration of local authority planning systems. It's designed to protect any special features for the future.

Listed buildings can still be developed and renovated - special consent must be applied for if any changes to that building might affect its special interest. It can be more difficult for you to replace windows in a listed building. Listed building consent is required from your Local Authority.

Under government planning guidance, listed buildings can be altered, extended and sometimes even demolished. The local authority uses listed building consent to make decisions that balance historic significance against issues like function and building condition.





NEW BUILD PROJECTS

When specifying windows for any new build property, it is important to remember that they will need to conform with the latest building regulations. This applies to a single home project and entire housing developments.

Timberlook windows can be specified to the new *Document Q* standard, having passed independent testing. Both the glass and the hardware we use are updated, and windows are certified to *PAS24* to satisfy the building inspectorate.

These are separate standards and should be specified when discussing your project with your local installer.



Pictured: New-build family home in Lancashire with a suite of black foiled Timberlook windows



Pictured: Colour-matched Painswick Timberlook Windows and Aluminium Sliding Patio Doors



TIMBERLOOK COLOURS

The Timberlook range of colours and finishes have been carefully selected to complement buildings of any age. There is something to suit any project, no matter the type of stone, brick, or mortar. Our selection of woodgrain effects includes oak and rosewood.

There are grey finishes for more modern homes, including the anthracite foil that works well with modern aluminium windows and doors. *Chartwell Green* has always been a popular choice but our favourite is the grey-green *Painswick* colour.

We can accommodate dual-colour options, helping you to match internal colours with your existing decor.



Pictured: New cottage windows in a textured Cream Foil finish with a single astragal bar.



Timberlook windows are available in a range of standard colours and woodgrain foils but available with colour combinations, inside and out.

When ordering differing colour combinations, the lead times normally quoted for standard colours may change. This matrix shows how colour combinations might affect manufacturing timescales and your delivery.

Consult your local specialist Timberlook Heritage supplier for the most accurate delivery estimates.

LEAD TIMES

S - STANDARD

E - EXTENDED

	White	Polar White	Black Foil	Irish Oak	Anthracite Foil	Smooth Anthracite	Chartwell Green	Cream Foil	Rosewood	Pebble Grey	Painswick	COLOUR INSIDE
White	S	S	S	E	S	S	S	S	S	S	S	
Polar White	n/a	S	E	E	E	E	E	E	E	S	E	
Black Foil	n/a	n/a	E	n/a	n/a	n/a	n/a	n/a	n/a	n/a	n/a	
Irish Oak	n/a	n/a	n/a	E	n/a	n/a	n/a	n/a	n/a	n/a	n/a	
Anthracite Foil	n/a	n/a	n/a	n/a	S	n/a	n/a	n/a	n/a	n/a	n/a	
Smooth Anthracite	n/a	n/a	n/a	n/a	n/a	S	n/a	n/a	n/a	n/a	n/a	
Chartwell Green	n/a	n/a	n/a	n/a	n/a	n/a	n/a	n/a	n/a	n/a	n/a	
Cream Foil	n/a	n/a	n/a	n/a	n/a	n/a	n/a	S	n/a	n/a	n/a	
Rosewood	n/a	n/a	n/a	n/a	n/a	n/a	n/a	n/a	S	n/a	n/a	
Pebble Grey	n/a	n/a	n/a	n/a	n/a	n/a	n/a	n/a	n/a	E	n/a	
Painswick	n/a	n/a	n/a	n/a	n/a	n/a	n/a	n/a	n/a	n/a	S	
	COLOUR OUTSIDE											

*Note: the new **Pebble Grey** will be available on orders manufactured from mid-July 2023*

FINISHING TOUCHES

Timberlook windows and doors come with contemporary hardware as standard, but their look can be enhanced with traditional, ironmongery styles of handle.

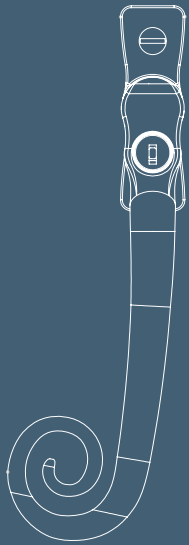
Our Premium Regency handles feature timeless designs that perfectly complement the Timberlook Heritage Flush Sash system. They also provide all the benefits you would expect from modern, high-security hardware that is easy to use.



Standard Handles

-  Chrome
-  White
-  Gold
-  Satin Silver
-  Smooth Grey

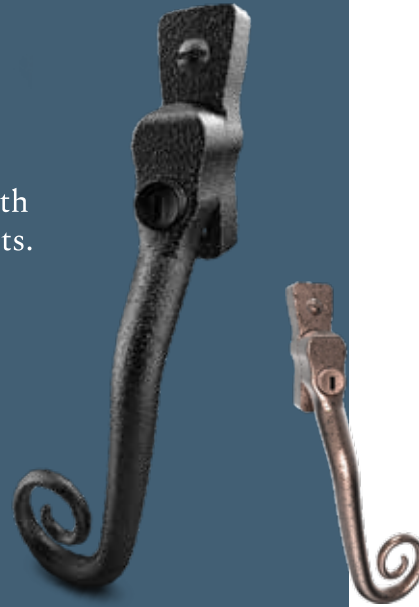




The Monkeytail

The distinctive curly shape adds instant character and charm to both heritage and contemporary projects.

- Overall Length: 149mm
- Handle Length: 129mm
- Fixing Plate Size: 57 x 18 x 13mm
- Espagnolette Gearbox & Lock



Window Accessories

Fully-suited dummy peg stays complete the look, attached solely to give a modern window the appearance of an older one.



Modern Classics

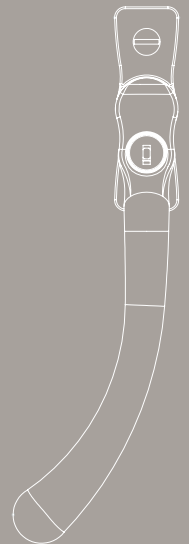
Choose from two textured finishes.



HERITANCE
BLACK



PEWTER
PATINA



The Peardrop

This timeless design is suitable for a range of settings. Easy to use handles with beautiful period proportions.

- Overall Length: 150mm
- Handle Length: 130mm
- Fixing Plate Size: 57 x 18 x 13mm
- Espagnolette Gearbox & Lock



Intelligent Designs

An edge-to-edge screw cover with authentic, clocked screw design that simply pushes to fit.

Windows open and close with a push button and beautiful rosette key that operates the dead lock.



COMPLETING THE LOOK

A successful renovation project may require more than just new windows. As a specialist manufacturer of both Aluminium and uPVC systems, we have a wide range of products that can be perfectly combined for your project.

Sliding or bi-folding aluminium doors can really open up a space and bring the outside in. The strength to weight ratio of aluminium allows us to accommodate larger glass units, with fewer and slimmer sightlines, your rooms can be flooded with more natural light and increase the sense of space.

Our rooflight and lantern roof systems only increase this effect. The slimmer, minimal sightlines of an aluminium system provides better, unobstructed views of the sky above.

Composite doors are the ideal solution for entrances, with styles and colours that maintain the integrity, look, and feel of the Timberlook Flush Sash and your heritage project. By matching colours and finishes across our product ranges, we can ensure that your designs and projects have consistency, and style, while providing the look and aesthetic you desire.

Speak to your local specialist supplier to learn more.





Combine the **Timberlook Flush Sash** with the slim sightlines of aluminium sliding doors



Pictured: A Solidor Ludlow composite door in Painswick, with heritage ironmongery handles.





TIMBERLOOK

FLUSH SASH

— HERITAGE WINDOWS —

Timberlook is a uPVC window system that successfully replicates traditional wooden windows with the appearance of an authentic mortise and tenon joint. It is ideal for period, character, or historic projects, and has been accepted as an alternative to timber in conservation areas.

With a minimal and understated look, our energy-efficient and low-maintenance Flush Casement Windows are suited to contemporary properties and modern living. Timberlook can be specified to Document Q, and is certified to PAS24 with upgraded glass and hardware. There are no tell-tale diagonal welds or joints that would normally identify a window as being fabricated from PVCu. Built with a 70mm frame depth, and supplied with separate glass units (not bonded in), installations are faster, easier, and safer than with other flush casement systems.

YOUR LOCAL SPECIALIST SUPPLIER IS:



DISCLAIMER: From time to time, the dimensions, hardware and designs of our products can change due to continuous product development. Accordingly, photographs, drawings, and product dimensions may not always be accurately represented on our website or in brochure material. In addition, material colours on our website and brochures are representations only. Printing and digital screens only show approximations. Customers should choose colours from actual samples. Before purchasing any product you should check with your installer as to the current design, dimension and exact colour of any product. Contact your installer if you have any other questions.